

THE TO&THROUGH COMMUNITY MILESTONES TOOL OVERVIEW

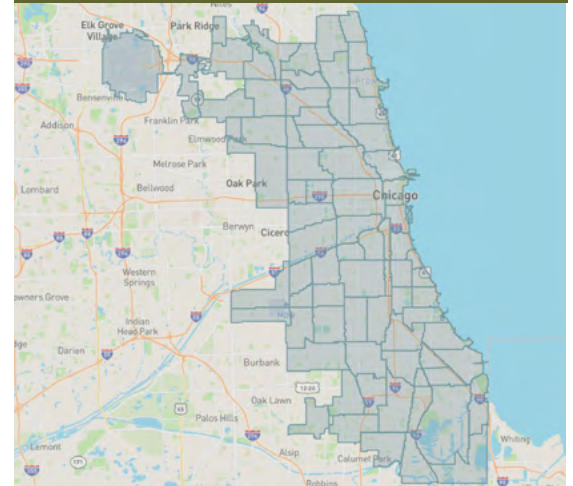


Today, Chicago Public Schools (CPS) freshmen from a given community area are more dispersed than ever: about three in four opt out of attending their assigned neighborhood school, with many enrolling in schools outside of their community. **The To&Through Community Milestones Tool is a publicly available online data resource that fills some of the critical gaps in community-centered education data in Chicago.** The tool enables users to drill down into CPS educational attainment data through the lens of Chicago's 77 community areas.

When coupled with local relationships and a deep understanding of a community area's context, in addition to census data available on the tool, it provides a starting place for a more holistic understanding of CPS students' experiences and can equip Chicago's community-based educators and leaders with vital feedback on the support provided to their students on the path to and through high school and college.

Explore educational attainment data by community area for the CPS students who live there.

Drill down into data for each of Chicago's 77 community areas:



THE TOOL PROVIDES DATA ON 5 KEY MILESTONES FOR HIGH SCHOOL & COLLEGE SUCCESS:

FRESHMAN ENROLLMENT

HIGH SCHOOL GRADUATION

COLLEGE ENROLLMENT

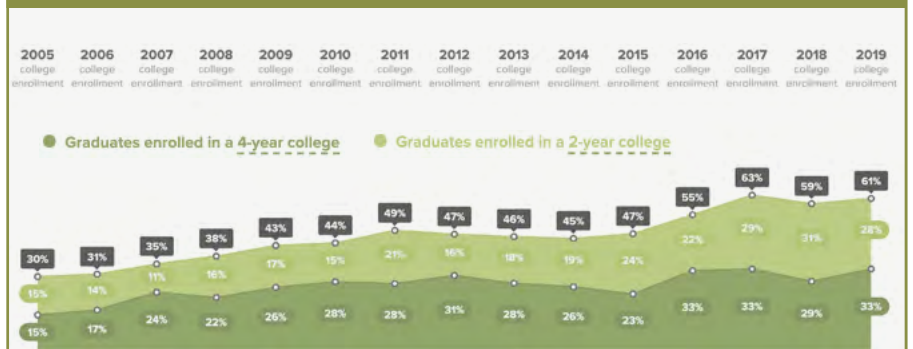
COLLEGE PERSISTENCE

COLLEGE COMPLETION

Learn which CPS high schools & colleges enroll the most students from your community:

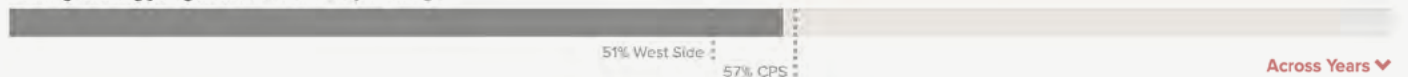
High School	Number of Enrollees	Percentage of Enrollees
Juarez	156	14%
Farragut	127	12%
World Language	90	8%
Infinity Math/Science	88	8%
Greater Lawndale HS	74	7%
Other	552	51%

Explore trends over time in your community:



Understand educational attainment outcomes for different groups of students in your community:

56% of graduating young men enrolled in a 2/4-year college



Any Colleges 4-year Colleges 2-year Colleges

Across Years



THE TO&THROUGH COMMUNITY MILESTONES TOOL USER GUIDE

2019 COMMUNITY AREA MILESTONES

District: Chicago Public Schools

Freshman Enrollment

High School Graduation

College Enrollment

College Persistence

College Completion

We recommend reflecting on the following questions while exploring the tool:

- **How is high school choice exercised by families in my community?**
- **What factors outside of students' in-school experiences impact my community's data?**
- **What community strengths contribute to our students' success?**
- **How does the data confirm or challenge what I know about my community's educational choices and outcomes?**

USING THE TOOL, USERS CAN INTERACT WITH DIFFERENT COMMUNITY AREAS' DATA TO ANSWER THE FOLLOWING QUESTIONS:

<p>FRESHMAN ENROLLMENT First-time freshmen who enrolled in a CPS high school</p>	<ul style="list-style-type: none"> • How many ninth graders in my community attend CPS, and how has that changed over time? • What types of high schools (neighborhood, selective, charter, or citywide) do students in my community most commonly attend?
<p>HIGH SCHOOL GRADUATION First-time CPS freshmen who graduated from high school within four years</p>	<ul style="list-style-type: none"> • How has the high school graduation rate in my community area changed over time? • Do high school graduation rates differ by students' race/ethnicity and gender?
<p>COLLEGE ENROLLMENT CPS high school graduates who immediately enrolled in two- & four-year colleges</p>	<ul style="list-style-type: none"> • Are students in my community immediately enrolling in college? How has college enrollment changed for students over the last decade? • What colleges are students in my community area most commonly attending?
<p>COLLEGE PERSISTENCE Immediate college enrollees who remained enrolled for two consecutive years</p>	<ul style="list-style-type: none"> • What percentage of immediate college enrollees are still enrolled after two years of college? • How have persistence rates differed for students that attend two-year or four-year colleges?
<p>COLLEGE COMPLETION Immediate college enrollees who complete a college degree or credential in six years</p>	<ul style="list-style-type: none"> • What percentage of college enrollees complete a degree or certificate within six years? • How have college completion rates changed over time for students from my community area, and do rates differ by students' race/ethnicity and gender?